

Water Meter

for Irrigation and Waste Water

Turbo-IR

Features and Benefits

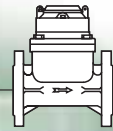
- Magnetic drive
- Dry, vacuum sealed register
- Option for “reed switch” sensor
- Register can rotate 360°
- Paddle wheel design prevents jamming and damage due to solid debris
- Measuring element suits range of water meter sizes
- Easy maintenance
- Can be installed in any orientation
- Low head loss.



The TURBO-IR uses a multi-blade plastic paddle mounted at the top of the water passage, where disturbance from solids suspended in the water is minimal, permitting accuracy of metering in water containing up to 30% solid debris.

Ideal for irrigation and waste water applications.

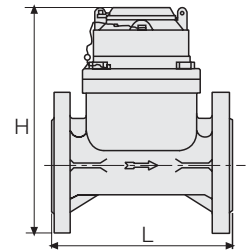




Technical Specifications

Dimensions and Weights

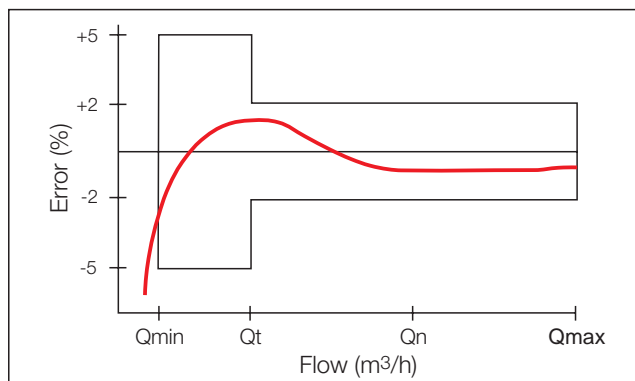
| Size | in | 2" | 2½" | 3" | 4" | 5" | 6" | 8" | 10" | 12" |
|-----------------|----|------|------|-------|-------|------|-------|------|-------|-------|
| | DN | 50 | 65 | 80 | 100 | 125 | 150 | 200 | 250 | 300 |
| L - Length (mm) | | 200 | 200 | 225 | 250 | 250 | 300 | 350 | 450 | 500 |
| H - Height (mm) | | 252 | 262 | 279.5 | 289.5 | 303 | 332.5 | 386 | 441.5 | 493.5 |
| Weight (kg) | | 10.5 | 11.8 | 15.5 | 17.5 | 19.5 | 30.5 | 42.5 | 60.0 | 82.5 |



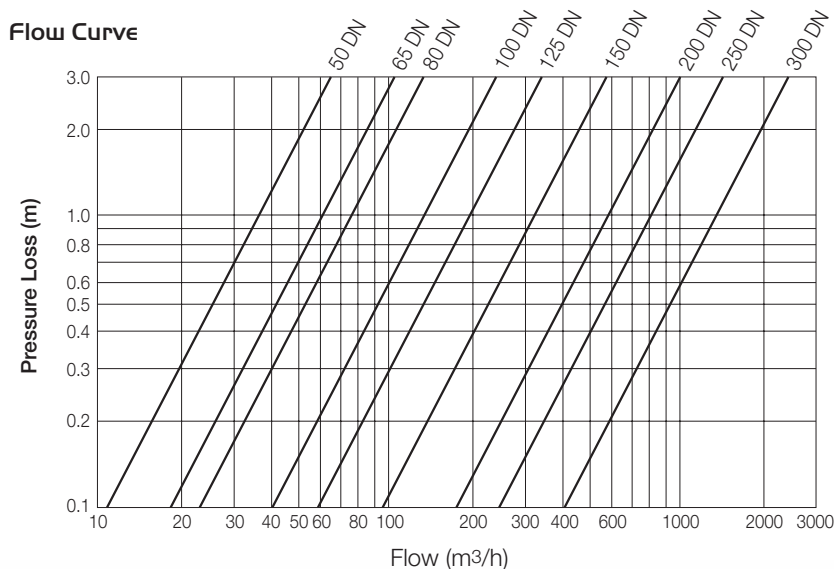
Accuracy Table

| Size | in | 2" | 2½" | 3" | 4" | 5" | 6" | 8" | 10" | 12" | |
|----------------------------------|---------------------|------------|-----|------|------|------|-----|------------|------|------|--|
| | DN | 50 | 65 | 80 | 100 | 125 | 150 | 200 | 250 | 300 | |
| Q _{max} - max. Flow | (m ³ /h) | 70 | 100 | 150 | 250 | 350 | 500 | 900 | 1200 | 1600 | |
| Q _n - Nominal Flow | (m ³ /h) | 35 | 50 | 75 | 125 | 175 | 250 | 450 | 600 | 800 | |
| Q _t - Transition Flow | (m ³ /h) | 10.5 | 15 | 22.5 | 37.5 | 52.5 | 75 | 135 | 180 | 240 | |
| Q _{min} - Min. Flow | (m ³ /h) | 2.8 | 4 | 6 | 10 | 14 | 20 | 35 | 48 | 64 | |
| Maximum Reading | (m ³) | 9999999.99 | | | | | | 99999999.9 | | | |
| Minimum Reading | (m ³) | 0.01 | | | | | | 0.1 | | | |

Accuracy Curve

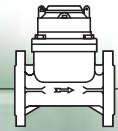


Flow Curve



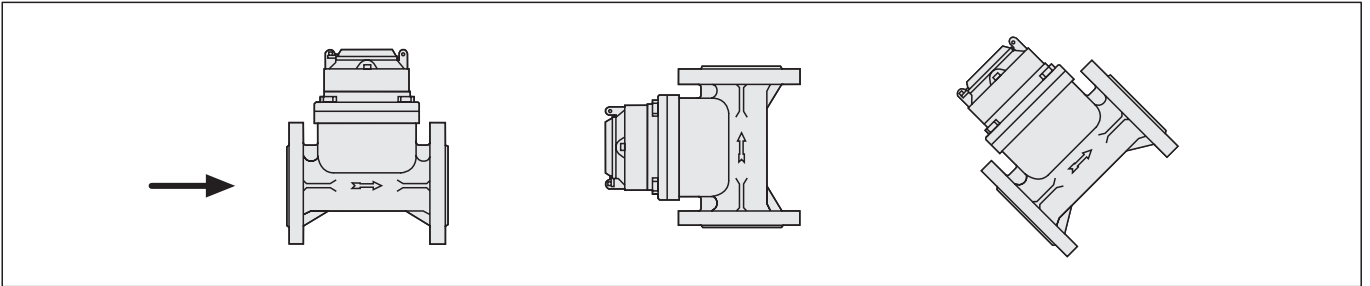
Operating Data

- **Pressure Rating:** 16 bar 232 psi
- **Temperature:** Water up to 40°C,; 105° F

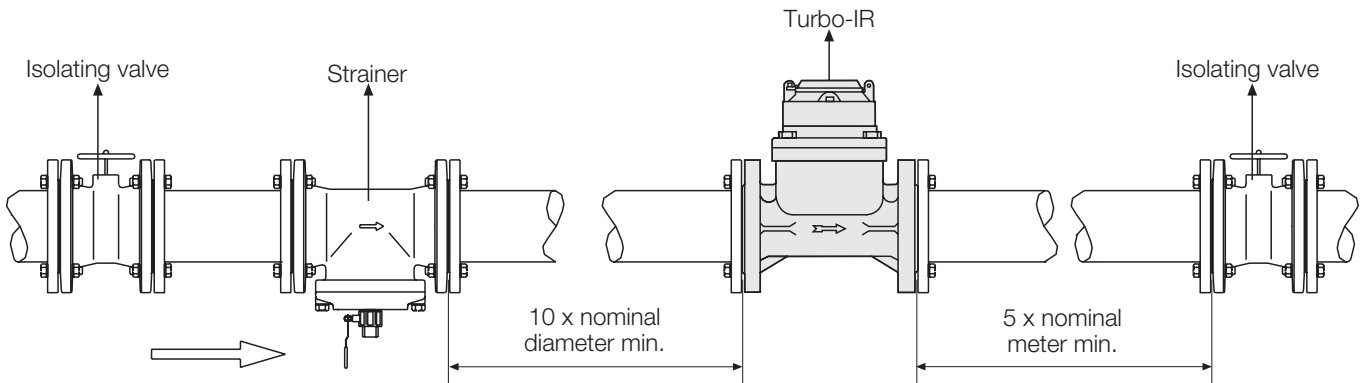


Installation

- The water meter can be installed in any orientation without interfering with metrological performance.
- Be sure to install so that water flow follows direction of arrow on water meter.



- To avoid turbulence that may interfere with accurate measurement, it is recommended to have 10 diameters of straight pipe upstream and 5 diameters downstream of water meter.
- Prior to installation, flush the line to remove debris.
- The TURBO-IR must be filled with water to operate.

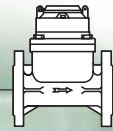


Reed Switch Assembly

- The Reed Switch pulser consists of plastic housing with a Reed Switch
- Cable: 2 core, 1.5m length
- Reed Switch: single
- Electrical Data:
Switching Volt.: 24 AV/DC max.
Switching Current: 0.01A max.

| DN | Reed Switch Pulse | | |
|--------------------|-------------------|------------------|-------------------|
| | 1 Pulse Per | | |
| | 100 liter | 1 m ³ | 10 m ³ |
| 2"-6" 50-150 | X | X | |
| 8"-12" 200-300 | | X | X |
| Order Codes | S3 | S2 | S1 |

For pulse preparation add Y/to code



Ordering Guide

Example: TURBO-IR – 65 – BD – M3 – PG – Y/S2

| Turbo-IR | 50 | 16 | M | PG | Y/S3 |
|------------------------|-----|----|---|----|------|
| Type | | | | | |
| Turbo-IR | | | | | |
| Size | | | | | |
| Code | | | | | |
| 2" - 50 mm | 50 | | | | |
| 2 1/2" - 65 mm | 65 | | | | |
| 3" - 80 mm | 80 | | | | |
| 4" - 100 mm | 100 | | | | |
| 5" - 125 mm | 125 | | | | |
| 6" - 150 mm | 150 | | | | |
| 8" - 200 mm | 200 | | | | |
| 10" - 250 mm | 250 | | | | |
| 12" - 300 mm | 300 | | | | |
| Flange Drilling | | | | | |
| Code | | | | | |
| ISO-16 | 16 | | | | |
| ANSI-125 | A1 | | | | |
| BSTD | BD | | | | |
| ABNT | B6 | | | | |
| JIS16 | J1 | | | | |
| ASTE | SE | | | | |
| ASTD | SD | | | | |
| Measure Units | | | | | |
| Code | | | | | |
| Cubic Meter | M3 | | | | |
| Coating | | | | | |
| Code | | | | | |
| Polyester Green | PG | | | | |

| Output Pulse Options (add Y/ for output preparations) | Units | Code | Available |
|--|------------------|------|----------------------|
| 1 Pulse for each | 100 Liter | S3 | 2"-6" 50-150 mm |
| | 1m ³ | S2 | 2"-12" 50-300 mm |
| | 10m ³ | S1 | 8"-12" 200-300 mm |

