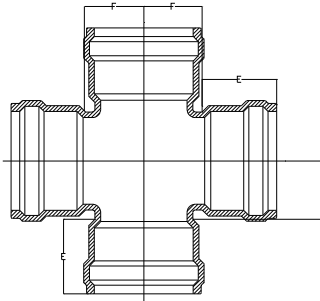
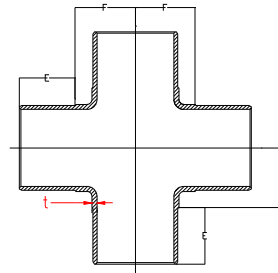


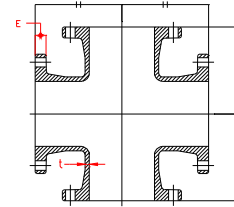
CRUZ



EXTREMOS JUNTA HIDRAULICA (PUSH ON JOINT ENDS)



EXTREMOS LISOS (PLAIN ENDS)

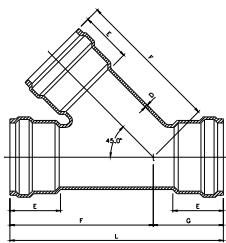


EXTREMOS BRIDA (FLANGED ENDS)

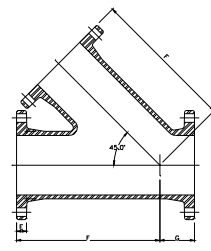
DIAM. NOMINAL	t Espesor	E			J	J1	LONGITUD EXTREMO DE DERIVACION mm																													
		JUNTA HIDRAULICA PARA PVC					EXTREMO LISO PARA PVC		EXTREMO BRIDA		2"		3"		4"		6"		8"		10"		12"		14"		16"		18"		20"		24"			
		F	H	L			F	H	F	H	F	H	F	H	F	H	F	H	F	H	F	H	F	H	F	H	F	H	F	H	F	H				
2	50	7.0	96.1	89.0	15.9																															
3	76	7.6	105.8	108.0	19.0	76.2	139.7																													
4	100	7.5	116.0	114	23.8	101.6	165.1																													
6	150	8.0	129.15	140	25.4	127.0	203.2																													
8	200	8.5	142.5	159	28.6	165.1	228.6																													
10	250	9.0	168.0	184	30.2	190.5	279.4																													
12	300	9.5	189.7	210	31.8	222.25	304.8																													
14	350	10.6	225.20	220	32.4	266.7	356.6																													
16	400	11.5	252.41	240	36.5	292.1	381																													
18	450	12.5	273.7	260	39.7	317.5	419.1																													
20	500	13.0	294.9	280	42.9	356.6	457.2																													
24	600	14.0			47.6		558.8																													

YEE

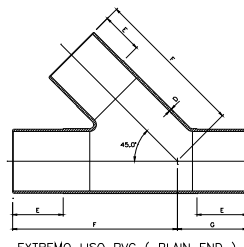
La compañía cuenta con la más amplia gama de accesorios en el mercado nacional, cuenta con referencias en todos los extremos que van desde 2" hasta 24", fabricados en Hierro Dúctil ASTM A 536. Se han desarrollado productos fundidos para proyectos especiales en diámetros de hasta 48".



EXTREMO JUNTA HIDRAULICA (PUSH ON JOINT END)



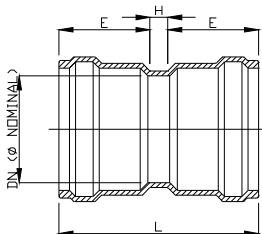
EXTREMO BRIDA (FLANGE END)



EXTREMO LISO PVC (PLAIN END)

DIAM. NOMINAL	JUNTA HIDRAULICA	EXTREMO BRIDA	EXTREMO LISO	F	H	L	D
2	50.8	15.8	89	-	-	-	7.0
3	76.2	108.63	19.1	108	254.0	76.2	395.65
4	101.6	116.68	23.8	114.0	304.8	76.2	460.36
6	152.4	131.09	25.4	140	368.3	88.9	548.61
8	203.2	143.87	28.6	159	444.5	114.3	647.26
10	254.0	168.38	30.1	184	520.7	127.0	773.93
12	304.8	188.40	31.8	210	622.3	139.7	888.65
14	356.6		35.0		685.8	152.4	
16	406.4		36.5		762.0	165.1	
18	457.2		39.7		812.8	177.8	
20	508.0		42.8		889.0	203.2	
24	609.6		47.6		1028.7	228.6	

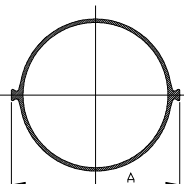
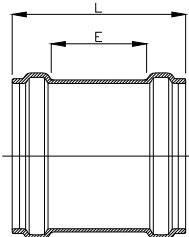
UNIONES DE CONSTRUCCION Y REPARACION



UNIONES DE CONSTRUCCION EXTREMOS JUNTA HIDRAULICA (PUSH ON JOINT ENDS)

DIAMETRO NOMINAL (ø)	E	H	L	
2 x 2	50 x 50	96	15	207
3 x 3	76 x 76	105.8	17	228.6
4 x 4	100 x 100	116	21	253
6 x 6	150 x 150	129.15	21	279
8 x 8	200 x 200	142.5	21	306
10 x 10	250 x 250	168	21	357
12 x 12	300 x 300	189.7	20	399

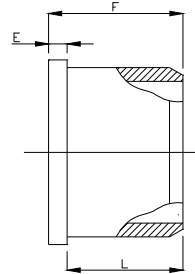
DIMENSIONES GENERALES



DIAMETRO NOMINAL	L	E	A	
14 x 14	360 X 350	410	194.94	444.39
16 x 16	400 X 400	480	252.14	499.52
18 x 18	450 X 450	530	263.12	553.32
20 x 20	500 X 500	620	320.2	606.67

DIMENSIONES GENERALES

TAPONES



DIAM. NOMINAL	E	F	L		
			PVC	ASBESTO CEMENTO	
3	76	11	124	113	120
4	100	15	134	119	120
6	150	17	172	155	120
8	200	17	174	157	120
10	250	24	210	186	120
12	300	25	225	200	120
14	350	16.8	216.8	200	120
16	400	17.8	217.8	200	120
18	450	19.0	219.0	220	120
20	500	20.4	220.4	240	120

DIMENSIONES GENERALES